

ODC FIXED ROOFLIGHT

A SLIMLINE FIXED FLAT ROOFLIGHT SYSTEM WITH EXCELLENT THERMAL PERFORMANCE AND ROBUST ALUMINIUM STRUCTURE.

The ODC Fixed Rooflight offers a simple solution to adding natural daylight into otherwise dark spaces.

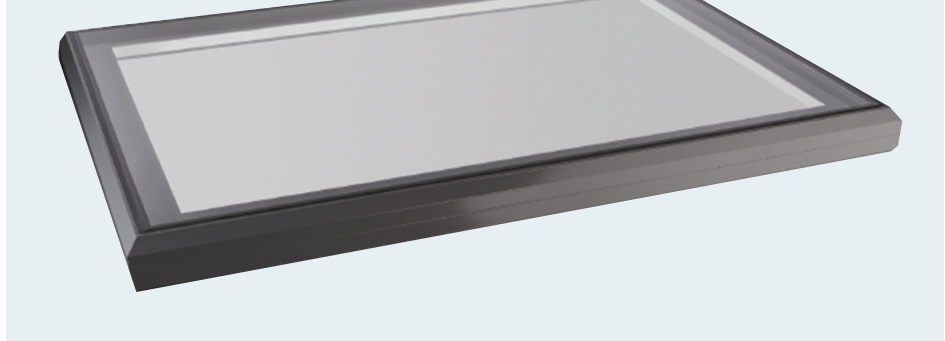
ODC Door & Glass Systems Ltd.

EMAIL: sales@odcglass.co.uk www.odcglass.co.uk

CLARITY IN DESIGN



ODC FIXED ROOFLIGHT

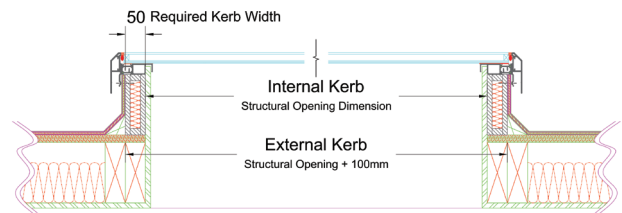


ODC's fixed size flat rooflight system has been awarded the BSI Kitemark for outstanding thermal performance and uncompromising safety. It boasts large thermal breaks for unrivalled, truly tested U-Values and incorporates Fade Guard Lamination for UV barrier protection.

These rooflights are designed to be installed on an industry standard pitched 5°, 50mm thick upstand provided by the builder. This ensures minimal pooling of rainwater on the rooflight.

A robust aluminium structure is very versatile in its design construction. It allows for internal finishes to meet the glass edge for an internal frameless appearance.

ODC fixed roof lights are supplied with clear safety glass as standard, with an Anthracite Grey finish on the outside and pure white on the inside.



OVERALL U-VALUES (W/m²K)

	800MM	1000MM	1200MM	1500MM	2000MM	2500MM
800MM	0.94					
1000MM		0.95	0.96	0.97	0.99	0.99
1200MM			0.96	0.97	0.99	
1500MM				0.98	0.99	

WEIGHT (Kg)

	800MM	1000MM	1200MM	1500MM	2000MM	2500MM
800MM	37					
1000MM		52	60	72	92	112
1200MM			69	83	106	
1500MM				100	129	

AVAILABLE SIZES; (structural opening size designed to be used with 50mm thick kerb ONLY)

	800MM	1000MM	1200MM	1500MM	2000MM	2500MM
800MM	Available					
1000MM	Available	Available				
1200MM	Available	Available	Available			
1500MM	Available	Available	Available	Available		

FOR MORE EXAMPLES OF OUR WORK VISIT WWW.ODCGLASS.CO.UK OR VISIT OUR SHOWROOMS:

LONDON: 97 Bollo Lane, London W3 8BN

POOLE: Sterte Road Industrial Estate, 145 Sterte Road, Poole, Dorset BH15 2AF

SALES: 03300 586 792 CUSTOMER SERVICES: 03300 586 793

CLARITY IN DESIGN

